



***Better Living
Through
Economic Opportunity***

Economic Outlook

Short-Term

- Disaster relief
- Economic contraction
- Stimulus package
- Take care of your neighbor

Long-Term

- Re-evaluate
- Economic recovery
- Strategies
- Greater economic awareness and balance of triple bottom line

Bellingham Whatcom EDC

Your Designated Associate Development Organization (ADO)

The ADO is the lead agency in each county for economic development.

The ADO is “a local economic development nonprofit corporation that is broadly representative of community interests.” (RCW 43.330.010)

Services Provided by Your ADO

Inbound Services

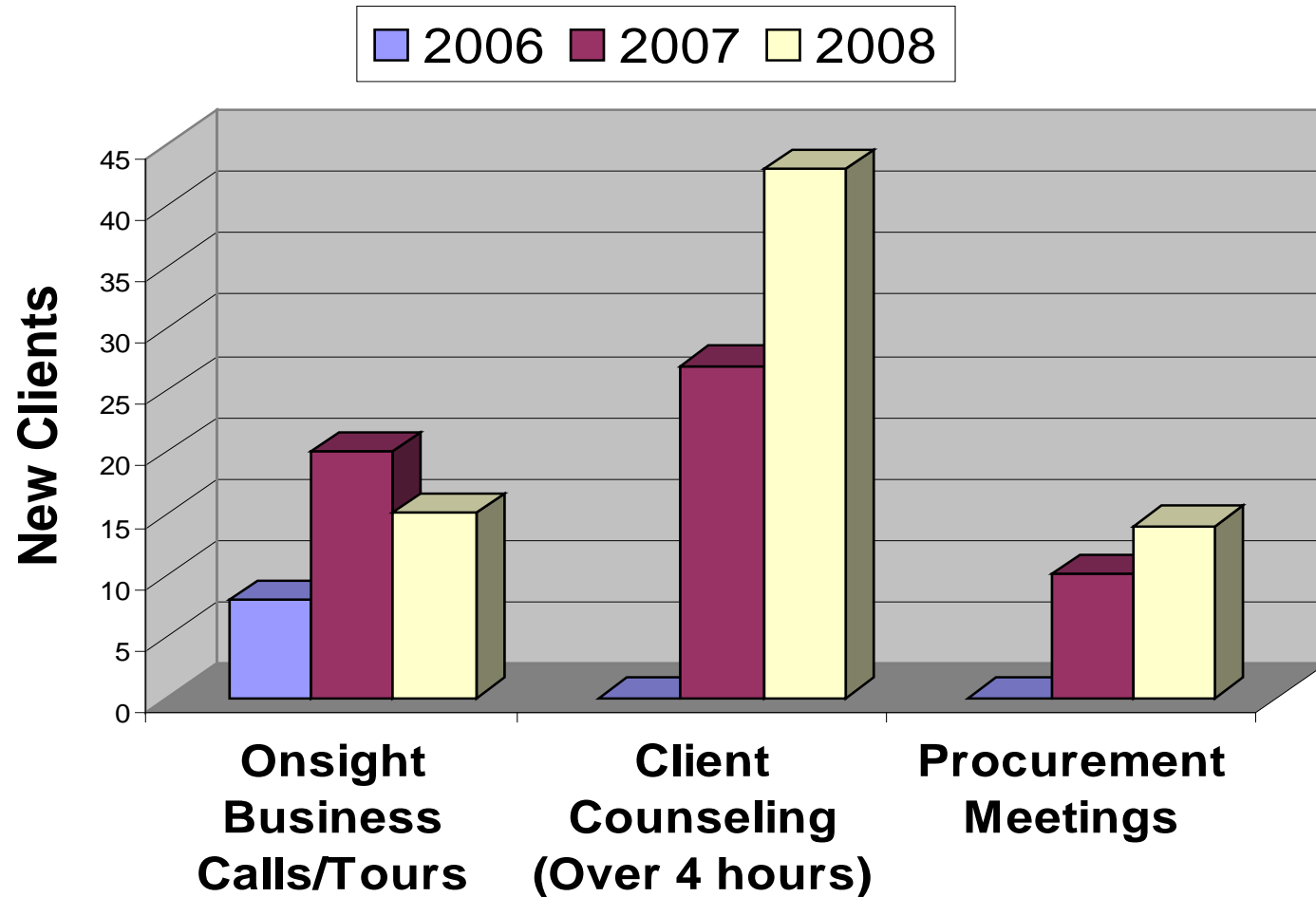
- **On-Call** for the State of Washington
Economic Development activities
- Initial **Point of Contact for Site Selectors**
- **Liaison for** State and International
Economic Development **Events**
- Provide **Free, confidential counseling** for inbound businesses

Business & Local Services

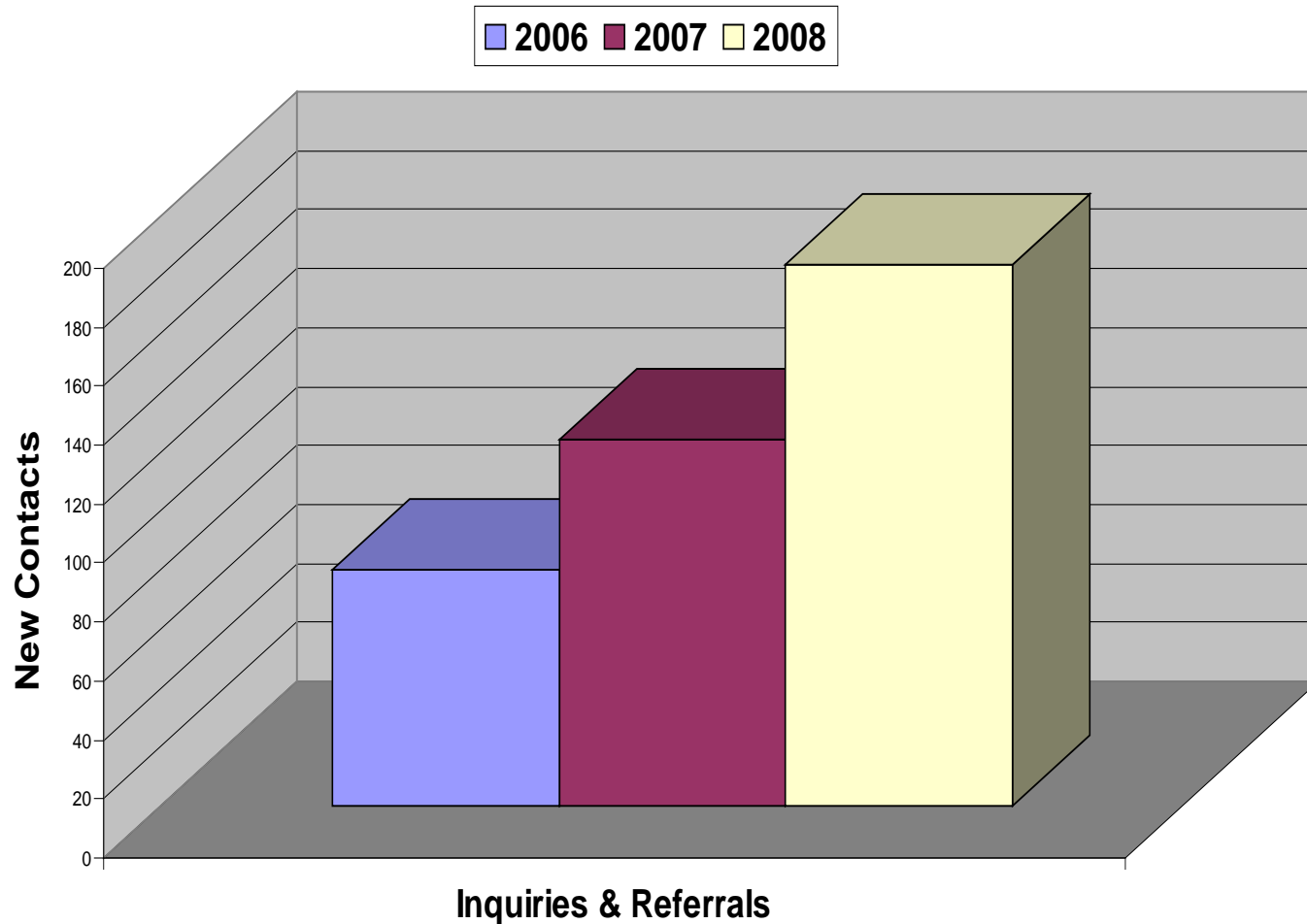
- **Client Services** Direct and Referral
- **Capacity Building** for local economic development network
- **Quick Response** gatherings of leaders, stakeholders and economic development technicians
- Long-Term **Economic Strategies**

Services funded by Locally Matched State Dollars

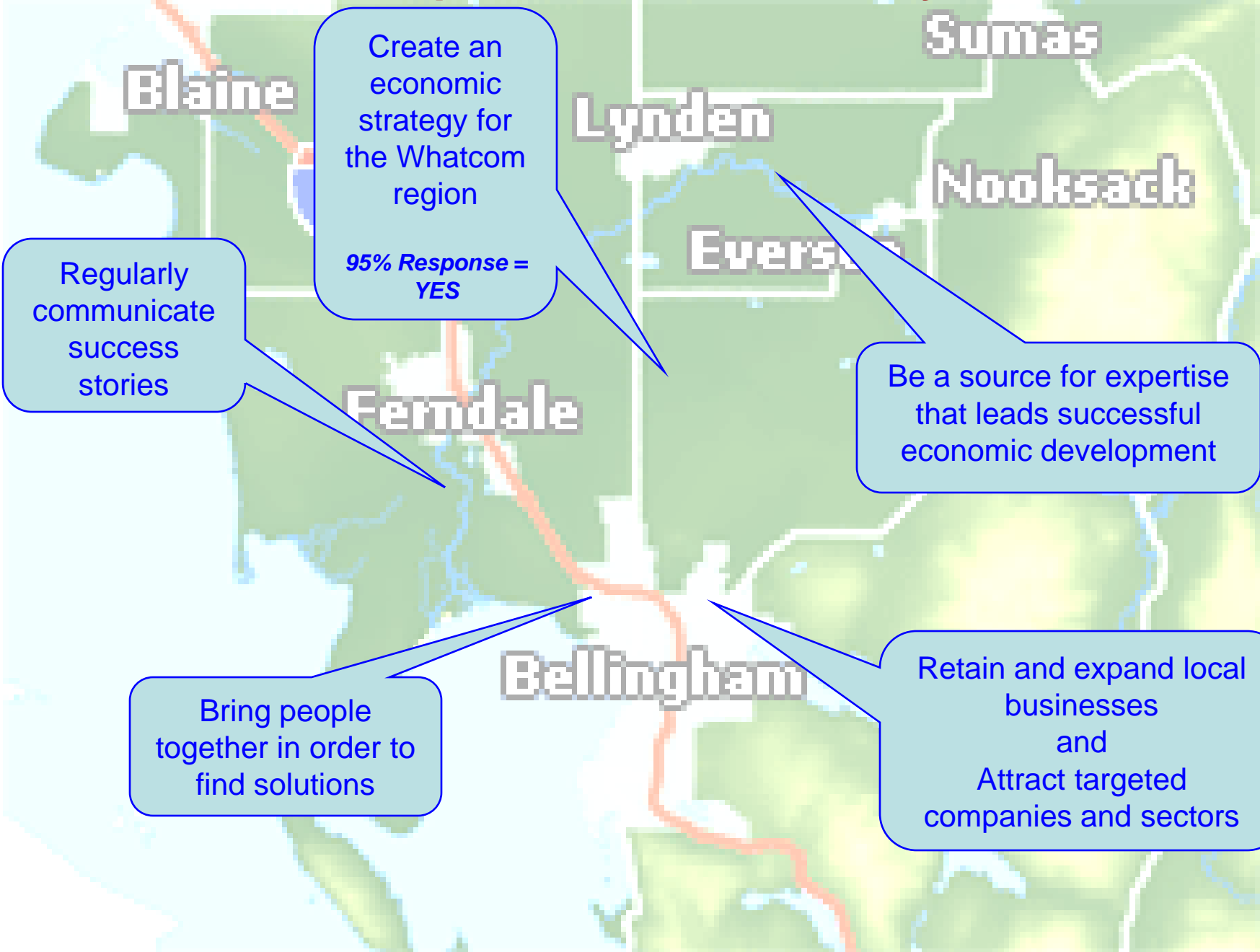
Free and Confidential Counseling



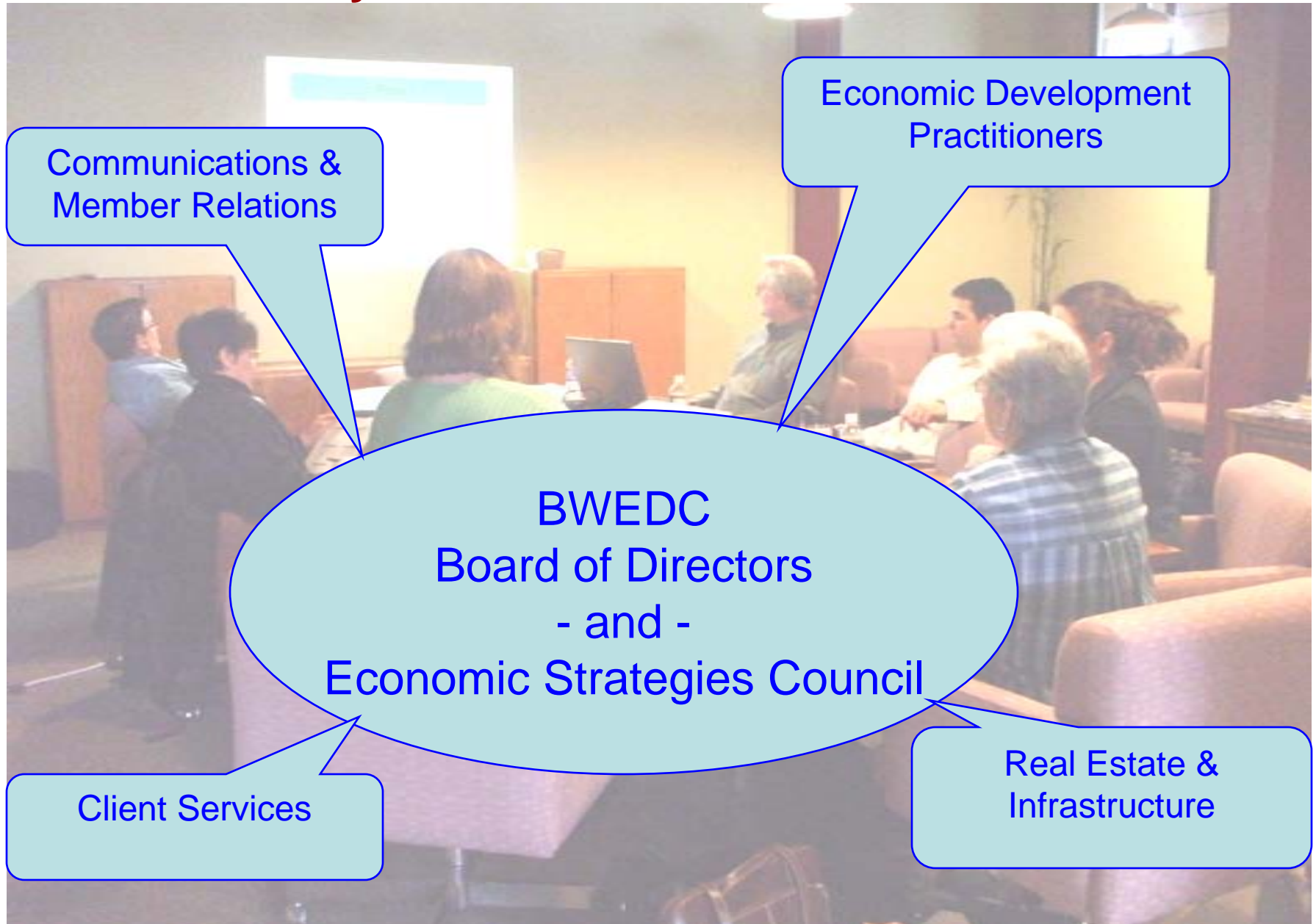
Inquiries and Referrals



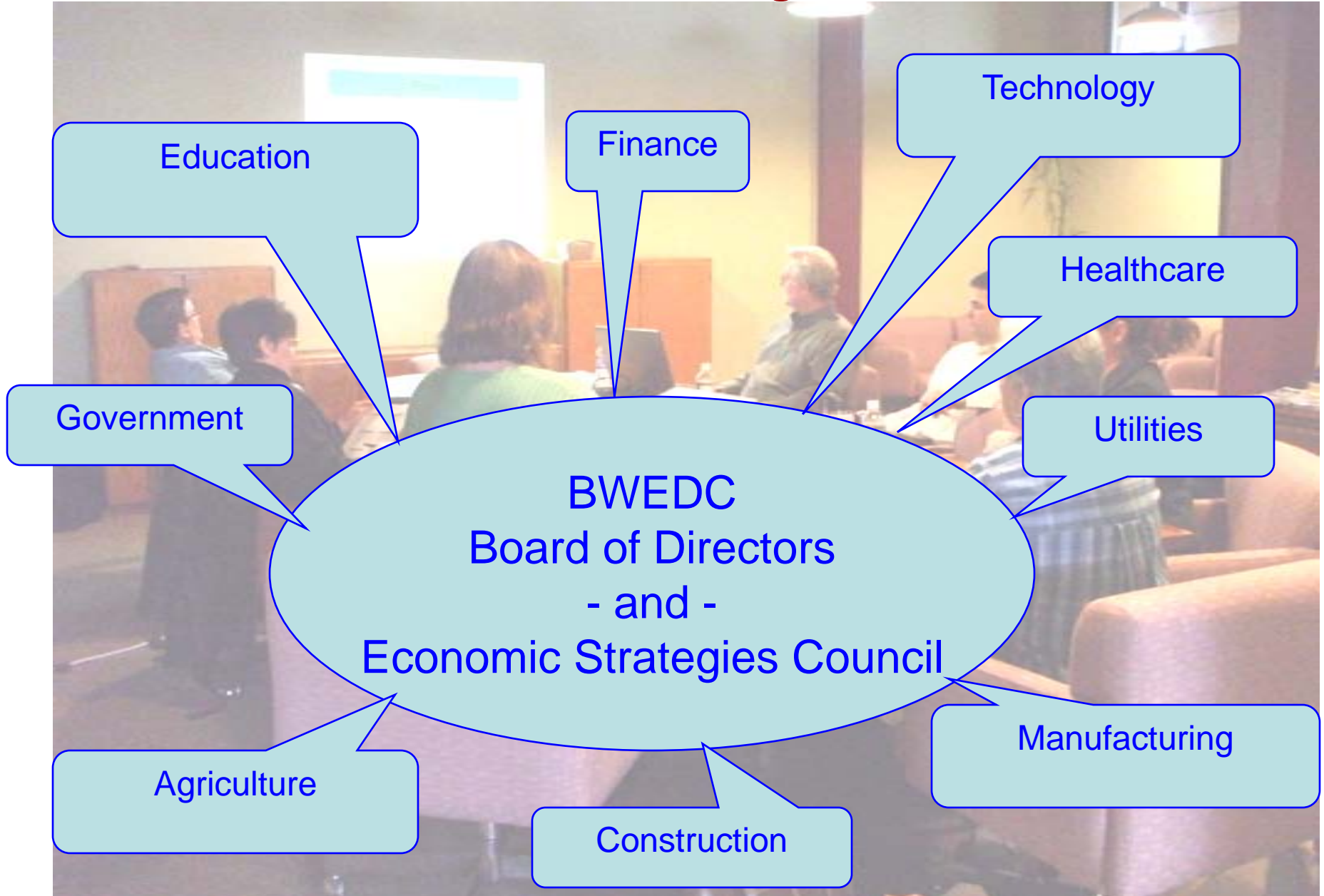
BrandPromise – Respondents to our survey want us to:



BWEDC Advisory Teams:



BWEDC Board & Economic Strategies Council:



BWEDC – How it Works

Example: Tools and Resources

BWEDC Revolving Loan Fund

- Direct Loans to local businesses
- Inquiries for confidential business counseling
- Access to resources and information

BWEDC Annual Alternative Lending Seminar

March 11, 2009

Bellingham Cruise Terminal

10:00 a.m. to 1:00 p.m.

- Provide research resources for other purposes
 - Assist Sustainable Connections in seeking funds for energy efficiency upgrades for businesses and individuals
 - Assist seeking economic funds for small cities and rural areas

BWEDC – How it Works

Example: Relocation Assistance

Counseling for Companies Relocating

- Local companies moving *within* our region
- Canadian and Pacific Rim businesses seeking US manufacturing and distribution locations
- Companies seeking the amenities of the Bellingham and the Whatcom region

Attracting Targeted Industry Sectors

- Port of Bellingham is targeting: Marine; Outdoor Recreation; Engineering/Technology; Food Processing

BWEDC – How it Works

Example: Capacity Building

Initiate discussions to address issues

- Whatcom County Comprehensive Plan *methodology and baseline data*
- Connect Whatcom Alliance for *Healthcare Access* with businesses to assess needs and provide relevant resources
- Assist City of Bellingham with *Employment Lands Analysis*

Team with economic development efforts

- City of Bellingham *Sustainable Strategies Council* and *Public Development Authority*
- City of Ferndale and City of Blaine *Economic Development Teams*
- Columbia River EDC, Vancouver, WA – leading effort to introduce legislation for statewide *Renewable Energy Investment Incentives*

BWEDC – How it Works

Example: Quick Response

Call Meetings for dignitaries and companies

- Provide *facilitation, local and background information and logistics* for meetings within the region
- Assemble elected officials, planning and public works officials, economic development technicians, commercial real estate and utilities professionals *for key companies considering to relocate*

Economic Stimulus

- Quick identification and initial detail for Federal and State officials on ready-to-build projects that would provide local jobs



Connecting with your BWEDC

- Call
- Stop By
- Visit our Website
- Sign up for E-Newsletter
- Attend Events
- Join an Advisory Team
- Become a BWEDC Member

www.BWEDC.org

115 Unity Street, Suite 101, Bellingham, WA 98225

Mailing Address:

PO Box 2803, Bellingham, WA 98227

Phone: (360) 676-4255

"Better Living Through Economic Opportunity"



Better Living Through Economic Opportunity

Bellingham Whatcom Economic Development Council

www.BWEDC.org

